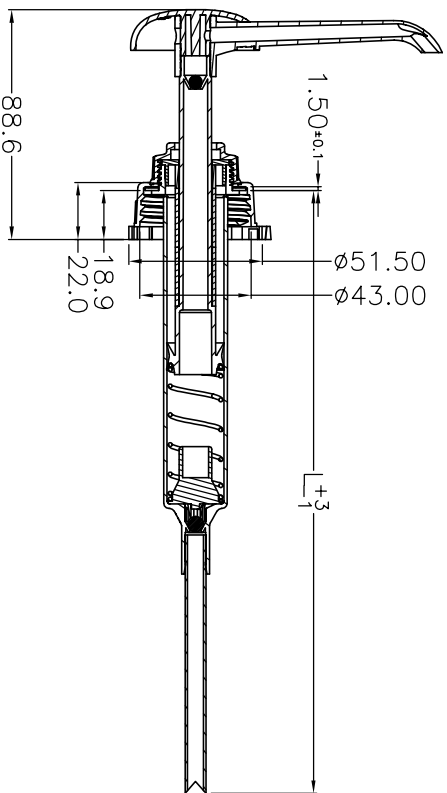
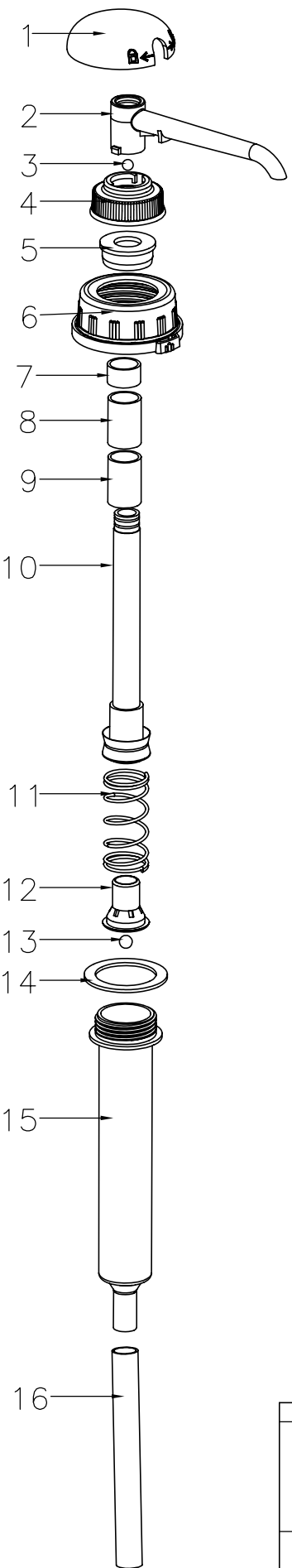




(ST4040) M43 10ML



REMARKS:  
Output:10±1.50ML

16	Dip tube	TR404/017/02	1	LDPE		21.177.1520
15	Pump housing	TR404/001	1	PP/RE420M0	14.08g	21.177.1520
14	Gasket	TR404/018	1	PE	0.33g	21.177.1350 21.177.1520 21.178.3297
13	Ball valve	TR404/015		SUS304	0.9g	21.178.3910
12	Spring base	TR404/003	1	HDPE/5306J	1.68g	21.177.1520
11	Spring	TR404/021	1	SUS201	6.4g	21.178.3910
10	Piston	TR404/002	1	PP/RE420M0	6.42g	21.177.1520
9	Component loop	TR404/004	1	HDPE/5306J	1.14	21.177.1520
8	Component loop	TR404/004	1	HDPE/5306J	1.14	21.177.1520
7	Component loop	TR404/005	1	HDPE/5306J	0.45	21.177.1520
6	Closure	TR404/011	1	HDPE/5306J	6.01g	21.177.1520
5	Seal cover	TR404/007	1	PP/HKR102	1.23g	21.177.1520
4	Small closure	TR404/006	1	PP/HKR102	3.32g	21.177.1520
3	Ball valve	TR404/016	1	SUS304	0.50g	21.178.3910
2	Nozzle	TR404/010	1	PP/RE420M0	4.60g	21.177.1520
1	Actuator	TR404/008	1	PP/RE420M0	5.80g	21.177.1520
序号/NO	名称/NAME	图号/DRAWING NO	数量/QT'Y	材料/MATERIAL	重量/WEIGHT	备注/REMARKS
设计/Design: 鲁科科 2017.04.02						
尺寸划分/公差		设计/Design: 鲁科科 2017.04.02				
1-4	等级/细级/中级/粗级/审核/批准/Approval:	设计/Design: 鲁科科 2017.04.02				
4-16	±0.07 ±0.20 ±0.50	设计/Design: 鲁科科 2017.04.02				
16-63	±0.10 ±0.30 ±0.70	设计/Design: 鲁科科 2017.04.02				
63-250	±0.20 ±0.50 ±1.20	设计/Design: 鲁科科 2017.04.02				
250-1000	±0.30 ±0.80 ±2.00	设计/Design: 鲁科科 2017.04.02				
重量/Weight:		设计/Design: 鲁科科 2017.04.02				
数量/Qt'Y:		设计/Design: 鲁科科 2017.04.02				
图号/DRAWING NO. ST4040/M43 ASSM		设计/Design: 鲁科科 2017.04.02				
系列号/PART NO. ST4040		设计/Design: 鲁科科 2017.04.02				
SHEET: 1/1		设计/Design: 鲁科科 2017.04.02				

TR4040 M43 10ml

SCALE: A

REV: A

SIZE: A4

SHEET: 1/1

TR4040 M43 10ml

SCALE: A

REV: A

SIZE: A4

SHEET: 1/1

TR4040 M43 10ml

SCALE: A

REV: A

SIZE: A4

SHEET: 1/1

TR4040 M43 10ml

SCALE: A

REV: A

SIZE: A4

SHEET: 1/1

TR4040 M43 10ml

SCALE: A

REV: A

SIZE: A4

SHEET: 1/1

TR4040 M43 10ml

SCALE: A

REV: A

SIZE: A4

SHEET: 1/1

TR4040 M43 10ml

SCALE: A

REV: A

SIZE: A4

SHEET: 1/1

TR4040 M43 10ml

SCALE: A

REV: A

SIZE: A4

SHEET: 1/1

TR4040 M43 10ml

SCALE: A

REV: A

SIZE: A4

SHEET: 1/1

TR4040 M43 10ml

SCALE: A

REV: A

SIZE: A4

SHEET: 1/1

TR4040 M43 10ml

SCALE: A

REV: A

SIZE: A4

SHEET: 1/1

TR4040 M43 10ml

SCALE: A

REV: A

SIZE: A4

SHEET: 1/1

TR4040 M43 10ml

SCALE: A

REV: A

SIZE: A4

SHEET: 1/1

TR4040 M43 10ml

SCALE: A

REV: A

SIZE: A4

SHEET: 1/1

TR4040 M43 10ml

SCALE: A

REV: A

SIZE: A4

SHEET: 1/1

TR4040 M43 10ml

SCALE: A

REV: A

SIZE: A4

SHEET: 1/1

TR4040 M43 10ml

SCALE: A

REV: A

SIZE: A4

SHEET: 1/1

TR4040 M43 10ml

SCALE: A

REV: A

SIZE: A4

SHEET: 1/1

TR4040 M43 10ml

SCALE: A

REV: A

SIZE: A4

SHEET: 1/1

TR4040 M43 10ml

SCALE: A

REV: A

SIZE: A4

SHEET: 1/1

TR4040 M43 10ml

SCALE: A

REV: A

SIZE: A4

SHEET: 1/1

TR4040 M43 10ml

SCALE: A

REV: A

SIZE: A4

SHEET: 1/1

TR4040 M43 10ml

SCALE: A

REV: A

SIZE: A4

SHEET: 1/1

TR4040 M43 10ml

SCALE: A

REV: A

SIZE: A4

SHEET: 1/1

TR4040 M43 10ml

SCALE: A

REV: A

SIZE: A4

SHEET: 1/1

TR4040 M43 10ml

SCALE: A

REV: A

SIZE: A4

SHEET: 1/1

TR4040 M43 10ml

SCALE: A

REV: A

SIZE: A4

SHEET: 1/1

TR4040 M43 10ml

SCALE: A

REV: A

SIZE: A4

SHEET: 1/1

TR4040 M43 10ml

SCALE: A

REV: A

SIZE: A4

SHEET: 1/1

TR4040 M43 10ml

SCALE: A

REV: A

SIZE: A4

SHEET: 1/1

TR4040 M43 10ml

SCALE: A

REV: A

SIZE: A4

SHEET: 1/1

TR4040 M43 10ml

SCALE: A

REV: A

SIZE: A4

SHEET: 1/1

TR4040 M43 10ml

SCALE: A

REV: A

SIZE: A4

SHEET: 1/1

TR4040 M43 10ml

SCALE: A

REV: A

SIZE: A4

SHEET: 1/1

TR4040 M43 10ml

SCALE: A

REV: A

SIZE: A4

SHEET: 1/1

TR4040 M43 10ml

SCALE: A

REV: A

SIZE: A4

SHEET: 1/1

TR4040 M43 10ml

SCALE: A

REV: A

SIZE: A4

SHEET: 1/1

TR4040 M43 10ml

SCALE: A

REV: A

SIZE: A4

SHEET: 1/1

TR4040 M43 10ml

SCALE: A

REV: A

SIZE: A4

SHEET: 1/1

TR4040 M43 10ml

SCALE: A

REV: A

SIZE: A4

SHEET: 1/1

TR4040 M43 10ml

SCALE: A

REV: A

SIZE: A4

SHEET: 1/1

TR4040 M43 10ml

SCALE: A

REV: A

SIZE: A4

SHEET: 1/1

TR4040 M43 10ml

SCALE: A

REV: A

SIZE: A4

SHEET: 1/1

TR4040 M43 10ml

SCALE: A

REV: A

SIZE: A4

SHEET: 1/1

TR4040 M43 10ml

SCALE: A

REV: A

SIZE: A4

SHEET: 1/1

TR4040 M43 10ml

SCALE: A

REV: A

SIZE: A4

SHEET: 1/1

TR4040 M43 10ml

SCALE: A

REV: A

SIZE: A4

SHEET: 1/1

TR4040 M43 10ml

SCALE: A

REV: A

SIZE: A4

SHEET: 1/1

TR4040 M43 10ml

SCALE: A

REV: A

SIZE: A4

SHEET: 1/1

TR4040 M43 10ml

SCALE: A

REV: A

SIZE: A4

SHEET: 1/1

TR4040 M43 10ml

SCALE: A

REV: A

SIZE: A4

SHEET: 1/1

TR4040 M43 10ml

SCALE: A

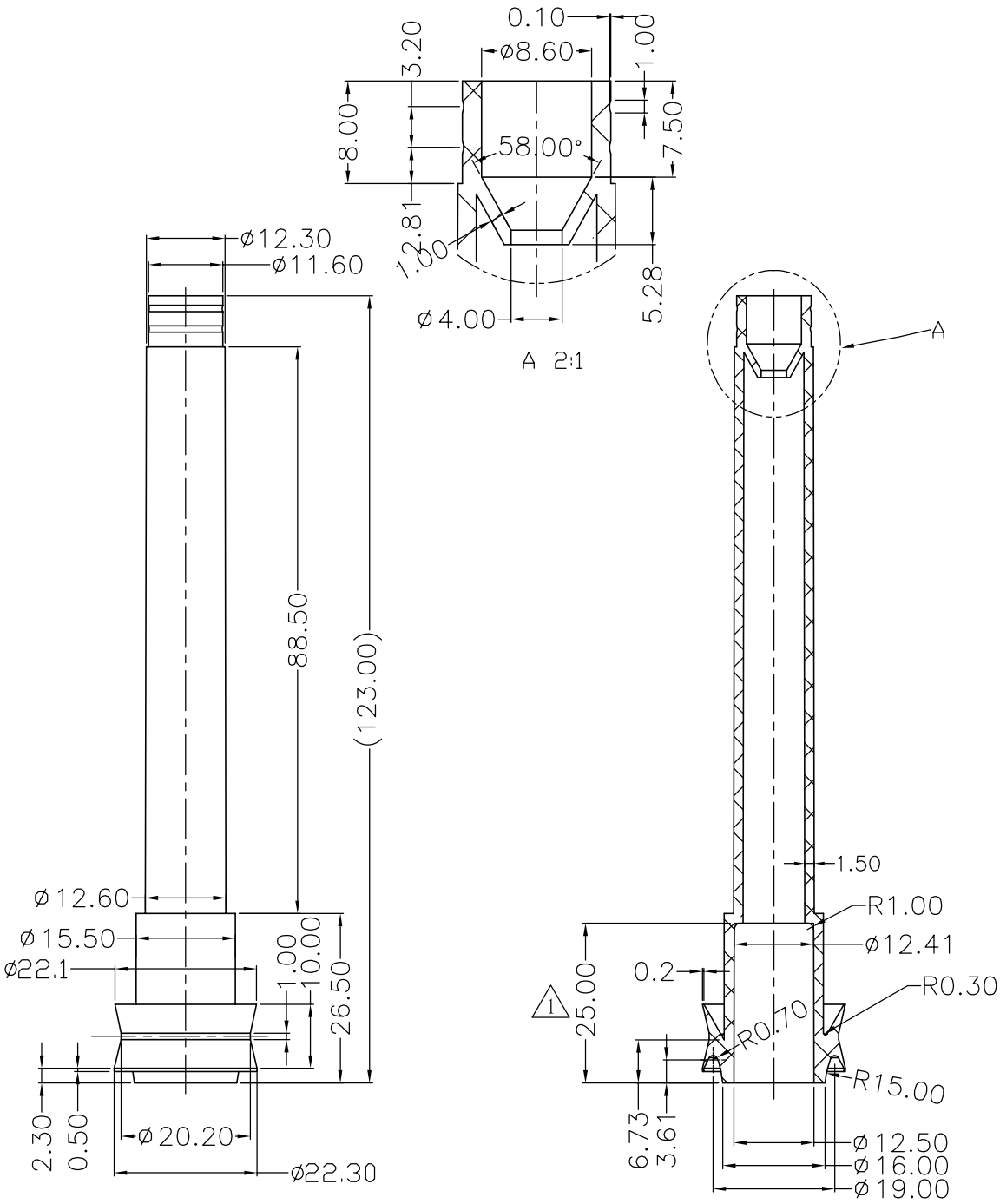
REV: A

SIZE: A4


SHEET: 1/1



REVISION RECORD		
REV	DESCRIPTION	DESIGN
1	Product revision	黄荣华 2006.12.09



Change in drawing is determined by our company without further notice

<div>MM (INCH)</div>				设计/Design: 郭胜 06.09.04		<div> <b>特力王</b> <i>TIRIT CORPORATION</i></div> <div>Fax: +86 (574) 62760899 Tel: +86 (574) 62760888</div> <div>PLANT: CE14-15, Far Edst Industry Park, Yuyao, Zhejiang Province, China</div>	
尺寸划分MM	等级	细级	中级	粗级	审核/Examine:	<div>Piston</div>	
1-4		±0.05	±0.10	±0.20	批准/Approval:		
4-16		±0.07	±0.20	±0.50	材料/Material: PP/RE420M0	SCALE:	
16-63		±0.10	±0.30	±0.70	重量/Weight: 6.42g	REV: A	
63-250		±0.20	±0.50	±1.20	图号/DRAWING NO. TR404/002	SIZE: A4	
250-1000		±0.30	±0.80	±2.00	数量/Qt'y:	SHEET: 1/1	
					系列号/PART NO. TR404		

6

5

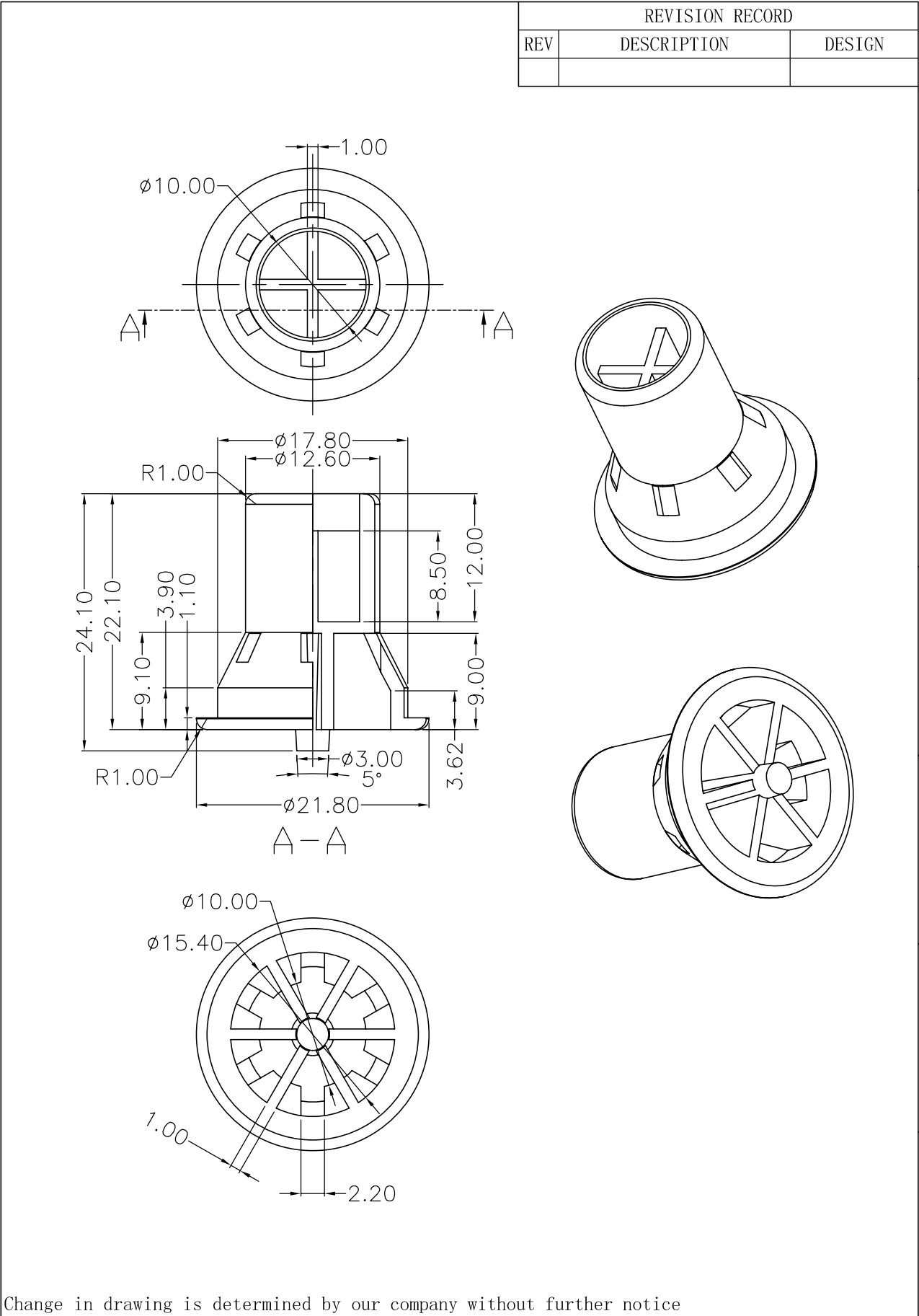
4

3

2

1

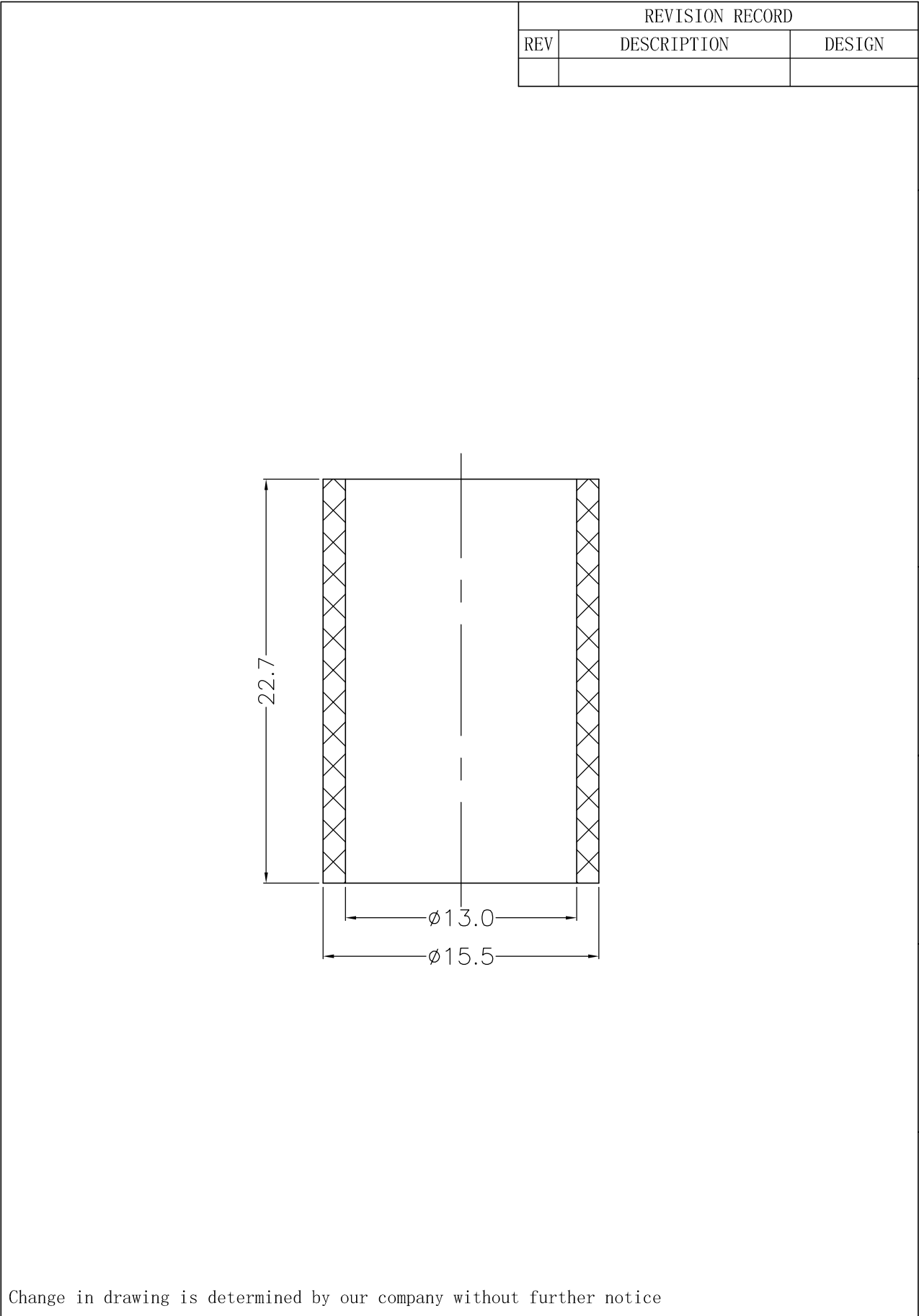
A



Change in drawing is determined by our company without further notice

设计/Design: 郭胜 06.09.04				TIRIT CORPORATION	
审核/Examine:				PLANT:CE14-15, Far Edst Industry Park, Yuyao, Zhejiang Province, China	
批准/Approval:				SCALE:	
材料/Material:HDPE/5306J				REV: A	
重量/Weight:1.68g				SIZE: A4	
数量/Qt'y:				SHEET: 1/1	

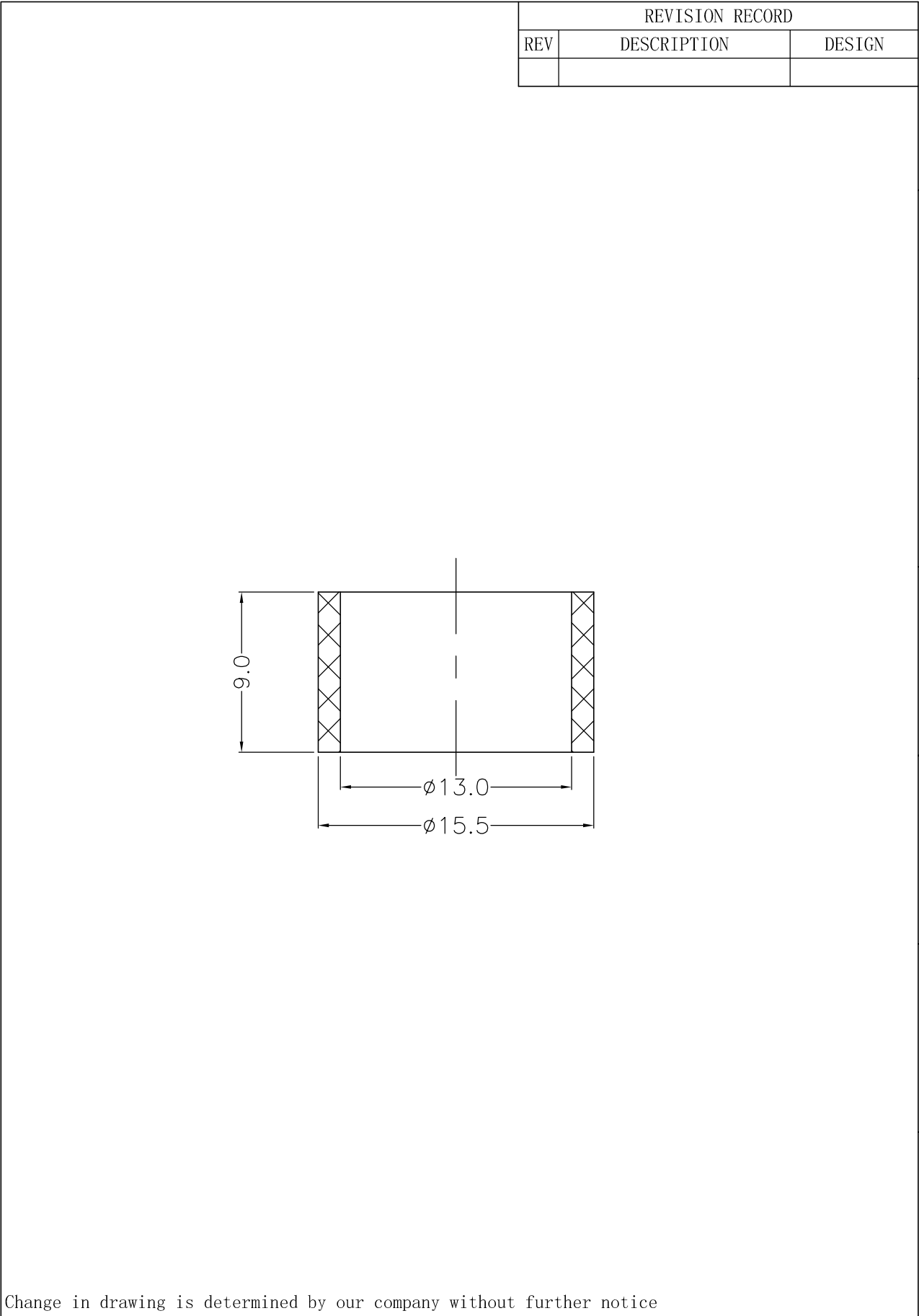
6	5	4	3	2	1
---	---	---	---	---	---



Change in drawing is determined by our company without further notice

				设计/Design: 郭胜 06.09.04		 <div>TIRRI CORPORATION</div> <div>Fax: +86 (574) 62760899 Tel: +86 (574) 62760888</div> <div>PLANT: CE14-15, Far Edst Industry Park, Yuyao, Zhejiang Province, China</div>	
尺寸划分MM	等级	细级	中级	粗级	审核/Examine:	Component loop	
1-4		±0.05	±0.10	±0.20	批准/Approval:		
4-16		±0.07	±0.20	±0.50	材料/Material: HDPE/5306J	SCALE: REV: A	
16-63		±0.10	±0.30	±0.70	重量/Weight: 1.14g		
63-250		±0.20	±0.50	±1.20	数量/Qty:	图号/DRAWING NO. TR404/004	
250-1000		±0.30	±0.80	±2.00		系列号/PART NO. TR404	
						SIZE: A4	
						SHEET: 1/1	

6 | 5 | 4 | 3 | 2 | 1



Change in drawing is determined by our company without further notice

<div><div>MM (INCH)</div><div>等级</div><div>细级</div><div>中级</div><div>粗级</div></div>		设计/Design: 郭胜 06.09.04		<div><div></div><div>TIRRIT CORPORATION</div><div>Fax: +86 (574) 62760899 Tel: +86 (574) 62760888</div><div>PLANT:CE14-15, Far Edst Industry Park, Yuyao, Zhejiang Province, China</div></div>	
尺寸划分MM		审核/Examine:		Component loop	
1-4		批准/Approval:			
4-16		材料/Material:HDPE/5306J		图号/DRAWING NO. TR404/005	
16-63		重量/Weight:0.45g			
63-250		数量/Qt'y:1		系列号/PART NO. TR404	
250-1000				SCALE:	
				REV: A	
				SIZE: A4	
				SHEET: 1/1	

6

5

4

3

2

1

H

G

F

E

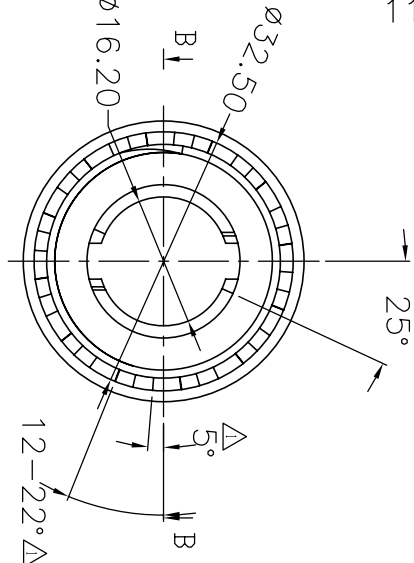
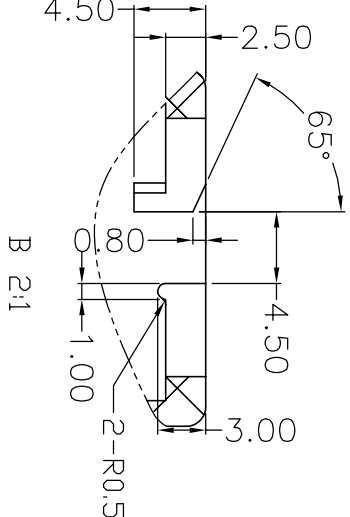
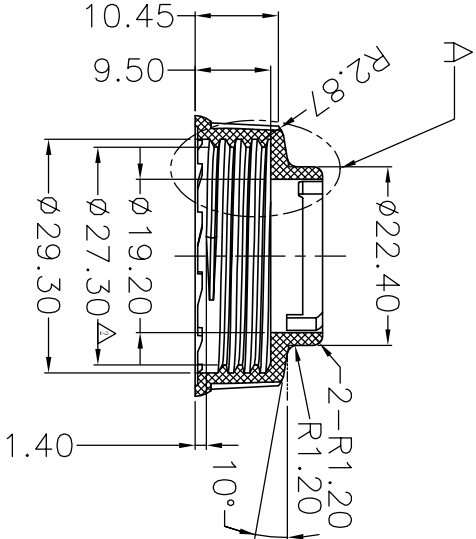
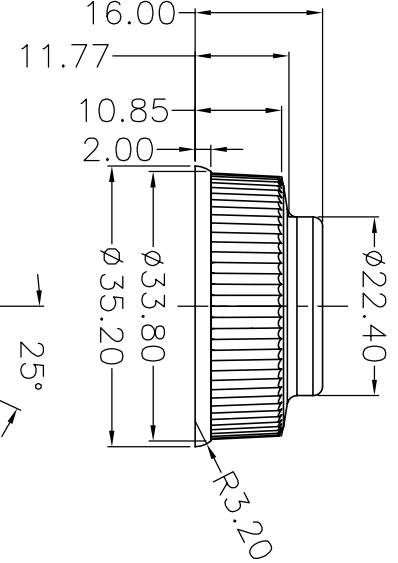
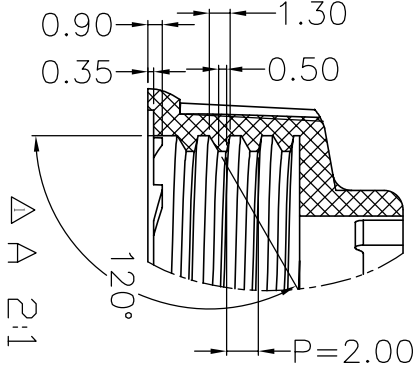
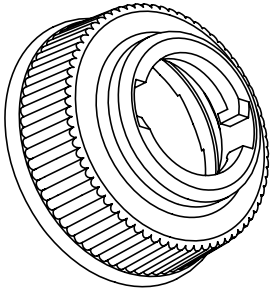
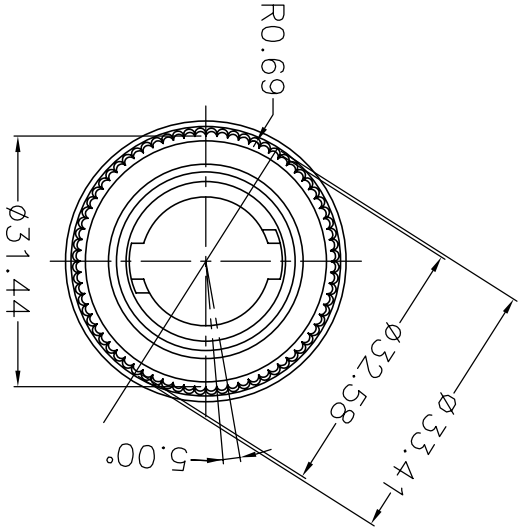
D

C

B

A

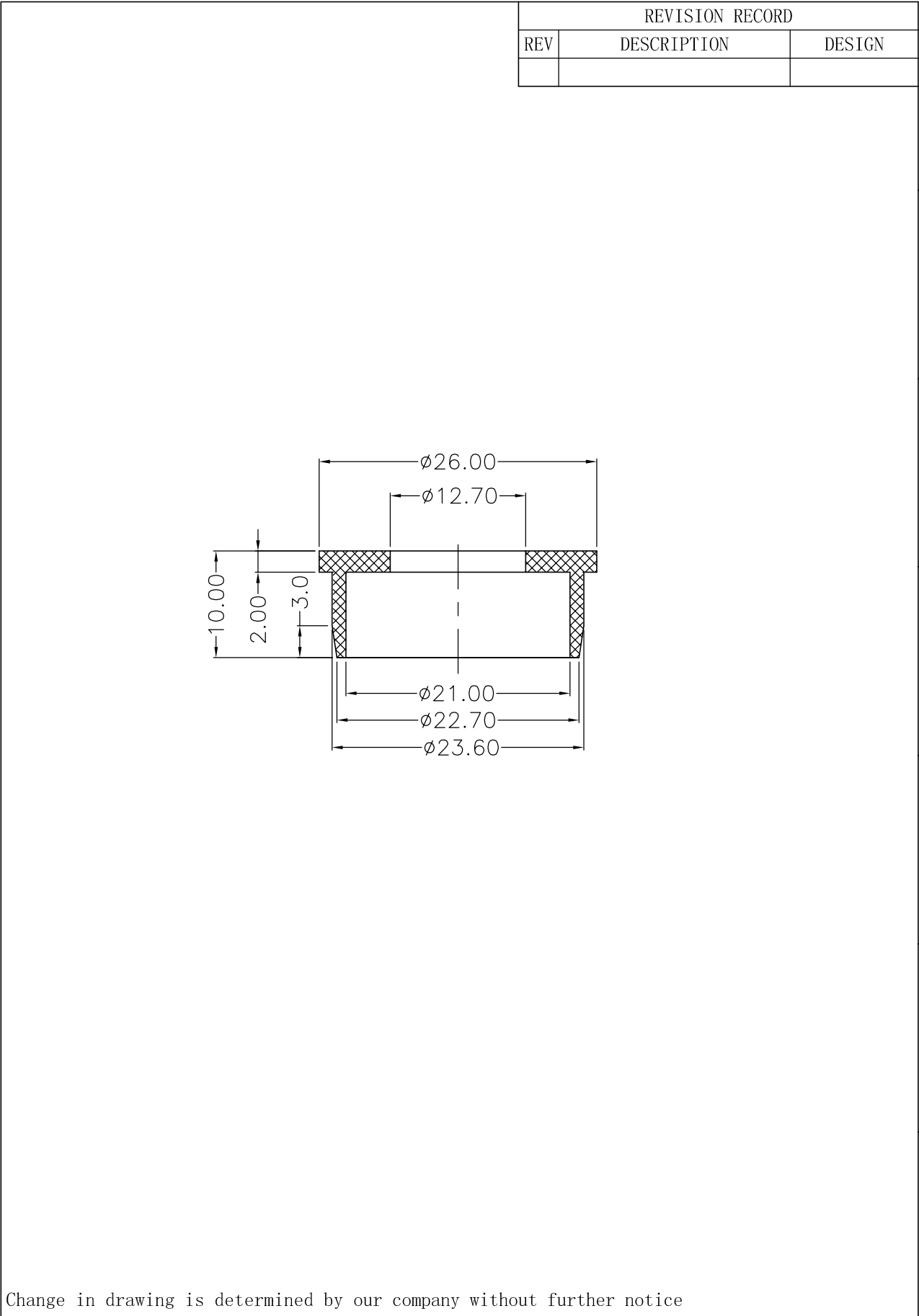
REVISION RECORD			
REV	DESCRIPTION	DESIGN	
1	Product revision	1	Product revision
2	Product revision	2	Product revision



Change in drawing is determined by our company without further notice

<div>尺寸/单位</div> <div>mm</div>		<div>设计/Design: 郭胜 06.09.04</div>		<div>审核/Examine:</div>		<div>批准/Approval:</div>	
<div>等级</div> <div>中級</div>		<div>材料/Material: PP/HK102</div>		<div>重量/Weight: 3.32g</div>		<div>数量/Qt: y: 1</div>	
1-4		±0.4		±0.10		±0.4	
4-16		±0.07		±0.20		±0.50	
16-63		±0.10		±0.30		±0.70	
63-250		±0.20		±0.50		±1.20	
250-1000		±0.30		±0.80		±2.00	
图号/DRAWING NO. TR104/006		系列号/PART NO. TR104		图号/DRAWING NO. TR104/006		系列号/PART NO. TR104	
图号/DRAWING NO. TR104/006		系列号/PART NO. TR104		图号/DRAWING NO. TR104/006		系列号/PART NO. TR104	
图号/DRAWING NO. TR104/006		系列号/PART NO. TR104		图号/DRAWING NO. TR104/006		系列号/PART NO. TR104	
图号/DRAWING NO. TR104/006		系列号/PART NO. TR104		图号/DRAWING NO. TR104/006		系列号/PART NO. TR104	
图号/DRAWING NO. TR104/006		系列号/PART NO. TR104		图号/DRAWING NO. TR104/006		系列号/PART NO. TR104	
图号/DRAWING NO. TR104/006		系列号/PART NO. TR104		图号/DRAWING NO. TR104/006		系列号/PART NO. TR104	
图号/DRAWING NO. TR104/006		系列号/PART NO. TR104		图号/DRAWING NO. TR104/006		系列号/PART NO. TR104	
图号/DRAWING NO. TR104/006		系列号/PART NO. TR104		图号/DRAWING NO. TR104/006		系列号/PART NO. TR104	
图号/DRAWING NO. TR104/006		系列号/PART NO. TR104		图号/DRAWING NO. TR104/006		系列号/PART NO. TR104	
图号/DRAWING NO. TR104/006		系列号/PART NO. TR104		图号/DRAWING NO. TR104/006		系列号/PART NO. TR104	
图号/DRAWING NO. TR104/006		系列号/PART NO. TR104		图号/DRAWING NO. TR104/006		系列号/PART NO. TR104	
图号/DRAWING NO. TR104/006		系列号/PART NO. TR104		图号/DRAWING NO. TR104/006		系列号/PART NO. TR104	
图号/DRAWING NO. TR104/006		系列号/PART NO. TR104		图号/DRAWING NO. TR104/006		系列号/PART NO. TR104	
图号/DRAWING NO. TR104/006		系列号/PART NO. TR104		图号/DRAWING NO. TR104/006		系列号/PART NO. TR104	
图号/DRAWING NO. TR104/006		系列号/PART NO. TR104		图号/DRAWING NO. TR104/006		系列号/PART NO. TR104	
图号/DRAWING NO. TR104/006		系列号/PART NO. TR104		图号/DRAWING NO. TR104/006		系列号/PART NO. TR104	
图号/DRAWING NO. TR104/006		系列号/PART NO. TR104		图号/DRAWING NO. TR104/006		系列号/PART NO. TR104	
图号/DRAWING NO. TR104/006		系列号/PART NO. TR104		图号/DRAWING NO. TR104/006		系列号/PART NO. TR104	
图号/DRAWING NO. TR104/006		系列号/PART NO. TR104		图号/DRAWING NO. TR104/006		系列号/PART NO. TR104	
图号/DRAWING NO. TR104/006		系列号/PART NO. TR104		图号/DRAWING NO. TR104/006		系列号/PART NO. TR104	
图号/DRAWING NO. TR104/006		系列号/PART NO. TR104		图号/DRAWING NO. TR104/006		系列号/PART NO. TR104	
图号/DRAWING NO. TR104/006		系列号/PART NO. TR104		图号/DRAWING NO. TR104/006		系列号/PART NO. TR104	
图号/DRAWING NO. TR104/006		系列号/PART NO. TR104		图号/DRAWING NO. TR104/006		系列号/PART NO. TR104	
图号/DRAWING NO. TR104/006		系列号/PART NO. TR104		图号/DRAWING NO. TR104/006		系列号/PART NO. TR104	
图号/DRAWING NO. TR104/006		系列号/PART NO. TR104		图号/DRAWING NO. TR104/006		系列号/PART NO. TR104	
图号/DRAWING NO. TR104/006		系列号/PART NO. TR104		图号/DRAWING NO. TR104/006		系列号/PART NO. TR104	
图号/DRAWING NO. TR104/006		系列号/PART NO. TR104		图号/DRAWING NO. TR104/006		系列号/PART NO. TR104	
图号/DRAWING NO. TR104/006		系列号/PART NO. TR104		图号/DRAWING NO. TR104/006		系列号/PART NO. TR104	
图号/DRAWING NO. TR104/006		系列号/PART NO. TR104		图号/DRAWING NO. TR104/006		系列号/PART NO. TR104	
图号/DRAWING NO. TR104/006		系列号/PART NO. TR104		图号/DRAWING NO. TR104/006		系列号/PART NO. TR104	
图号/DRAWING NO. TR104/006		系列号/PART NO. TR104		图号/DRAWING NO. TR104/006		系列号/PART NO. TR104	
图号/DRAWING NO. TR104/006		系列号/PART NO. TR104		图号/DRAWING NO. TR104/006		系列号/PART NO. TR104	
图号/DRAWING NO. TR104/006		系列号/PART NO. TR104		图号/DRAWING NO. TR104/006		系列号/PART NO. TR104	
图号/DRAWING NO. TR104/006		系列号/PART NO. TR104		图号/DRAWING NO. TR104/006		系列号/PART NO. TR104	
图号/DRAWING NO. TR104/006		系列号/PART NO. TR104		图号/DRAWING NO. TR104/006		系列号/PART NO. TR104	
图号/DRAWING NO. TR104/006		系列号/PART NO. TR104		图号/DRAWING NO. TR104/006		系列号/PART NO. TR104	
图号/DRAWING NO. TR104/006		系列号/PART NO. TR104		图号/DRAWING NO. TR104/006		系列号/PART NO. TR104	
图号/DRAWING NO. TR104/006		系列号/PART NO. TR104		图号/DRAWING NO. TR104/006		系列号/PART NO. TR104	
图号/DRAWING NO. TR104/006		系列号/PART NO. TR104		图号/DRAWING NO. TR104/006		系列号/PART NO. TR104	
图号/DRAWING NO. TR104/006		系列号/PART NO. TR104		图号/DRAWING NO. TR104/006		系列号/PART NO. TR104	
图号/DRAWING NO. TR104/006		系列号/PART NO. TR104		图号/DRAWING NO. TR104/006		系列号/PART NO. TR104	
图号/DRAWING NO. TR104/006		系列号/PART NO. TR104		图号/DRAWING NO. TR104/006		系列号/PART NO. TR104	
图号/DRAWING NO. TR104/006		系列号/PART NO. TR104		图号/DRAWING NO. TR104/006		系列号/PART NO. TR104	
图号/DRAWING NO. TR104/006		系列号/PART NO. TR104		图号/DRAWING NO. TR104/006		系列号/PART NO. TR104	
图号/DRAWING NO. TR104/006		系列号/PART NO. TR104		图号/DRAWING NO. TR104/006		系列号/PART NO. TR104	
图号/DRAWING NO. TR104/006		系列号/PART NO. TR104		图号/DRAWING NO. TR104/006		系列号/PART NO. TR104	
图号/DRAWING NO. TR104/006		系列号/PART NO. TR104		图号/DRAWING NO. TR104/006		系列号/PART NO. TR104	
图号/DRAWING NO. TR104/006		系列号/PART NO. TR104		图号/DRAWING NO. TR104/006		系列号/PART NO. TR104	
图号/DRAWING NO. TR104/006		系列号/PART NO. TR104		图号/DRAWING NO. TR104/006		系列号/PART NO. TR104	
图号/DRAWING NO. TR104/006		系列号/PART NO. TR104		图号/DRAWING NO. TR104/006		系列号/PART NO. TR104	
图号/DRAWING NO. TR104/006		系列号/PART NO. TR104		图号/DRAWING NO. TR104/006		系列号/PART NO. TR104	
图号/DRAWING NO. TR104/006		系列号/PART NO. TR104		图号/DRAWING NO. TR104/006		系列号/PART NO. TR104	
图号/DRAWING NO. TR104/006		系列号/PART NO. TR104		图号/DRAWING NO. TR104/006		系列号/PART NO. TR104	
图号/DRAWING NO. TR104/006		系列号/PART NO. TR104		图号/DRAWING NO. TR104/006		系列号/PART NO. TR104	
图号/DRAWING NO. TR104/006		系列号/PART NO. TR104		图号/DRAWING NO. TR104/006		系列号/PART NO. TR104	
图号/DRAWING NO. TR104/006		系列号/PART NO. TR104		图号/DRAWING NO. TR104/006		系列号/PART NO. TR104	
图号/DRAWING NO. TR104/006		系列号/PART NO. TR104		图号/DRAWING NO. TR104/006		系列号/PART NO. TR104	
图号/DRAWING NO. TR104/006		系列号/PART NO. TR104		图号/DRAWING NO. TR104/006		系列号/PART NO. TR104	
图号/DRAWING NO. TR104/006		系列号/PART NO. TR104		图号/DRAWING NO. TR104/006		系列号/PART NO. TR104	
图号/DRAWING NO. TR104/006		系列号/PART NO. TR104		图号/DRAWING NO. TR104/006		系列号/PART NO. TR104	
图号/DRAWING NO. TR104/006		系列号/PART NO. TR104		图号/DRAWING NO. TR104/006		系列号/PART NO. TR104	
图号/DRAWING NO. TR104/006		系列号/PART NO. TR104		图号/DRAWING NO. TR104/006		系列号/PART NO. TR104	
图号/DRAWING NO. TR104/006		系列号/PART NO. TR104		图号/DRAWING NO. TR104/006		系列号/PART NO. TR104	
图号/DRAWING NO. TR104/006		系列号/PART NO. TR104		图号/DRAWING NO. TR104/006		系列号/PART NO. TR104	

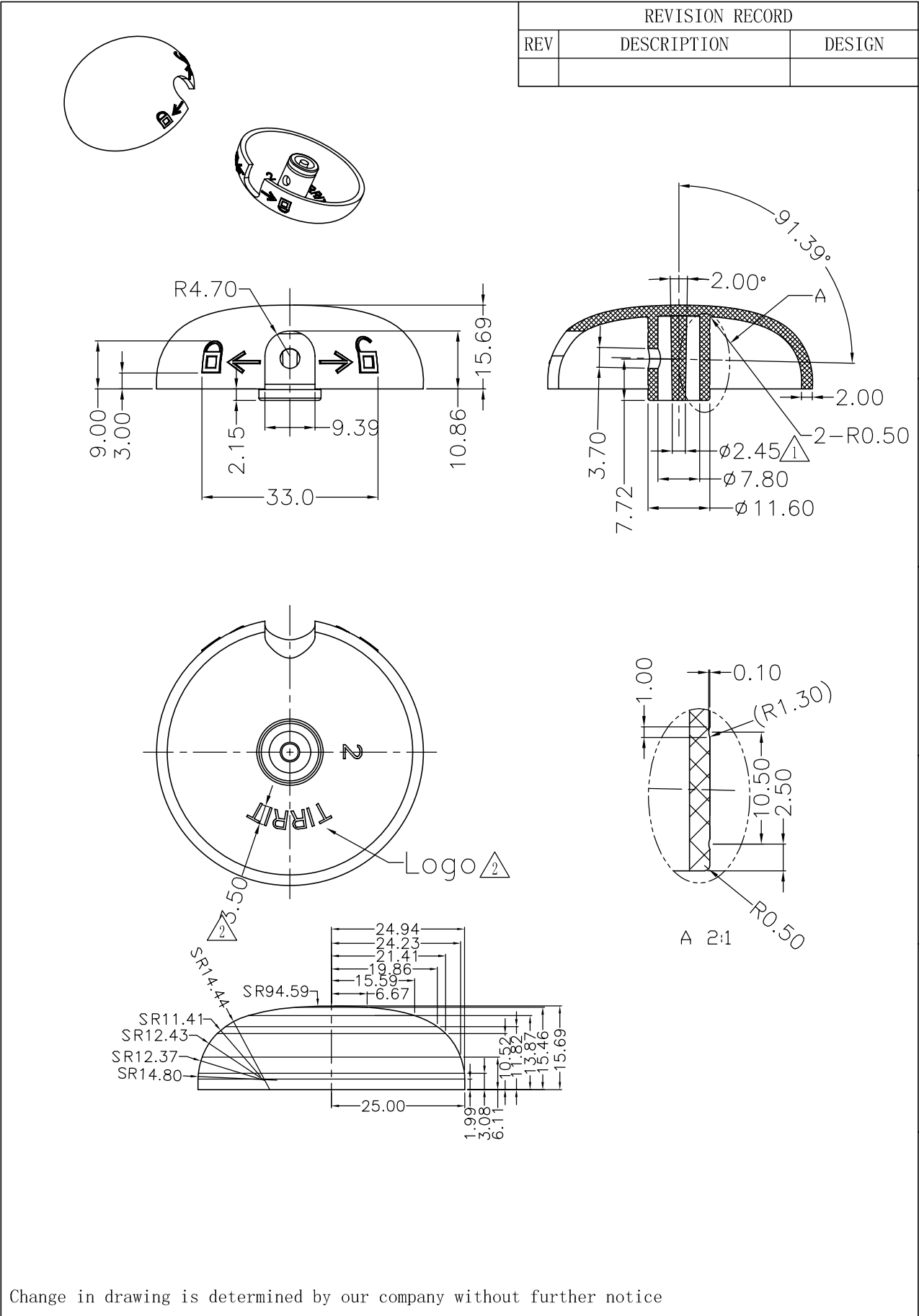




Change in drawing is determined by our company without further notice

<div><div>MM (INCH)</div><div><div>等级</div><div>细级</div><div>中级</div><div>粗级</div></div><div>设计/Design: 郭胜 06.09.04</div></div>				<div><div><div>TIRIT CORPORATION</div><div>Fax: +86 (574) 62760899 Tel: +86 (574) 62760888</div><div>PLANT: CE14-15, Far Edst Industry Park, Yuyao, Zhejiang Province, China</div></div></div>	
尺寸划分MM	细级	中级	粗级	审核/Examine:	
1-4	±0.05	±0.10	±0.20	批准/Approval:	
4-16	±0.07	±0.20	±0.50	材料/Material: PP/HKR102	
16-63	±0.10	±0.30	±0.70	重量/Weight: 1.23g	
63-250	±0.20	±0.50	±1.20	数量/Qty: 1	
250-1000	±0.30	±0.80	±2.00	图号/DRAWING NO. TR404/007	
				系列号/PART NO. TR404	SHEET: 1/1

6 | 5 | 4 | 3 | 2 | 1



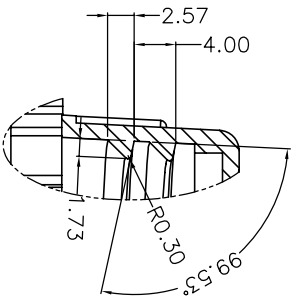
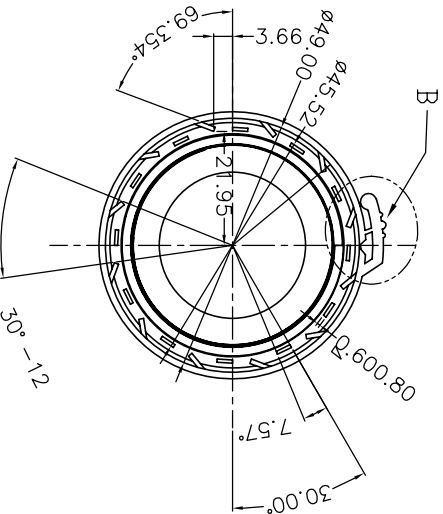
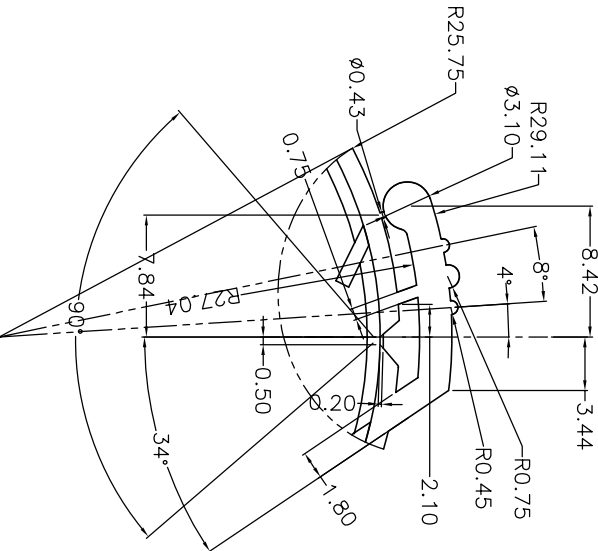
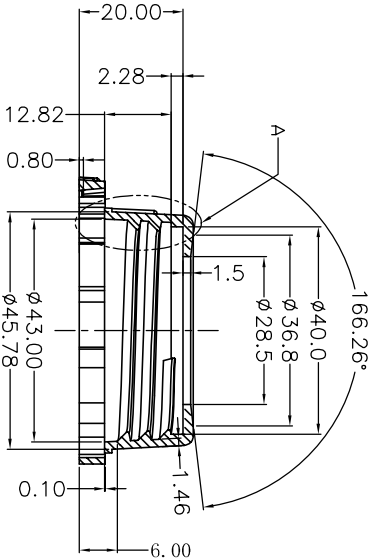
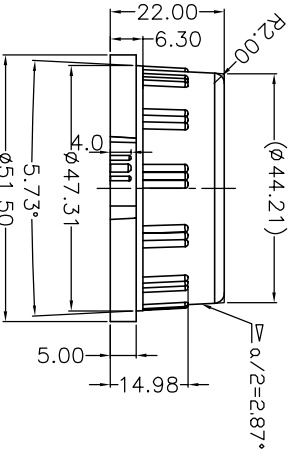
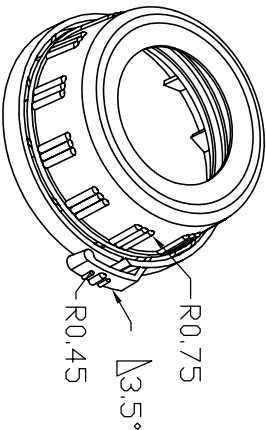
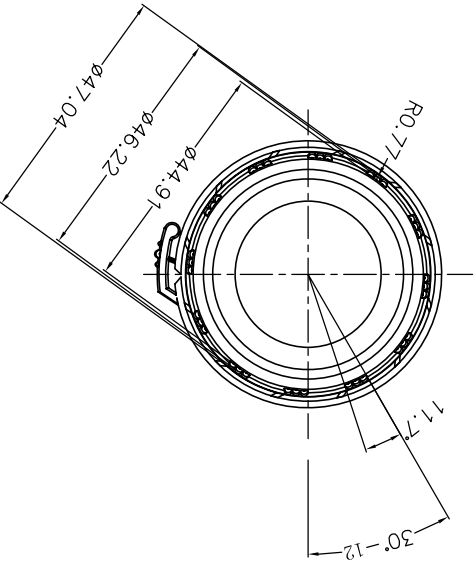
Change in drawing is determined by our company without further notice

<div><div></div><div>mm (INCH)</div></div> <div><div></div><div></div><div></div></div>				设计/Design: 郭胜 06.09.04		<div><div><div></div></div><div>特力工貿</div></div> <div>TIRIT CORPORATION</div> <div>Fax: +86 (574) 62760899 Tel: +86 (574) 62760888</div> <div>PLANT: CE14-15, Far Edst Industry Park, Yuyao, Zhejiang Province, China</div>	
尺寸划分MM	等级	细级	中级	粗级	审核/Examine:	Actuator	
1-4		±0.05	±0.10	±0.20	批准/Approval:		
4-16		±0.07	±0.20	±0.50	材料/Material: PP/RE420M0	图号/DRAWING NO. TR404/008	
16-63		±0.10	±0.30	±0.70	重量/Weight: 5.80g		
63-250		±0.20	±0.50	±1.20	数量/Qty: 1	系列号/PART NO. TR404	
250-1000		±0.30	±0.80	±2.00			
						SCALE:	
						REV: A	
						SIZE: A4	
						SHEET: 1/1	

6 | 5 | 4 | 3 | 2 | 1



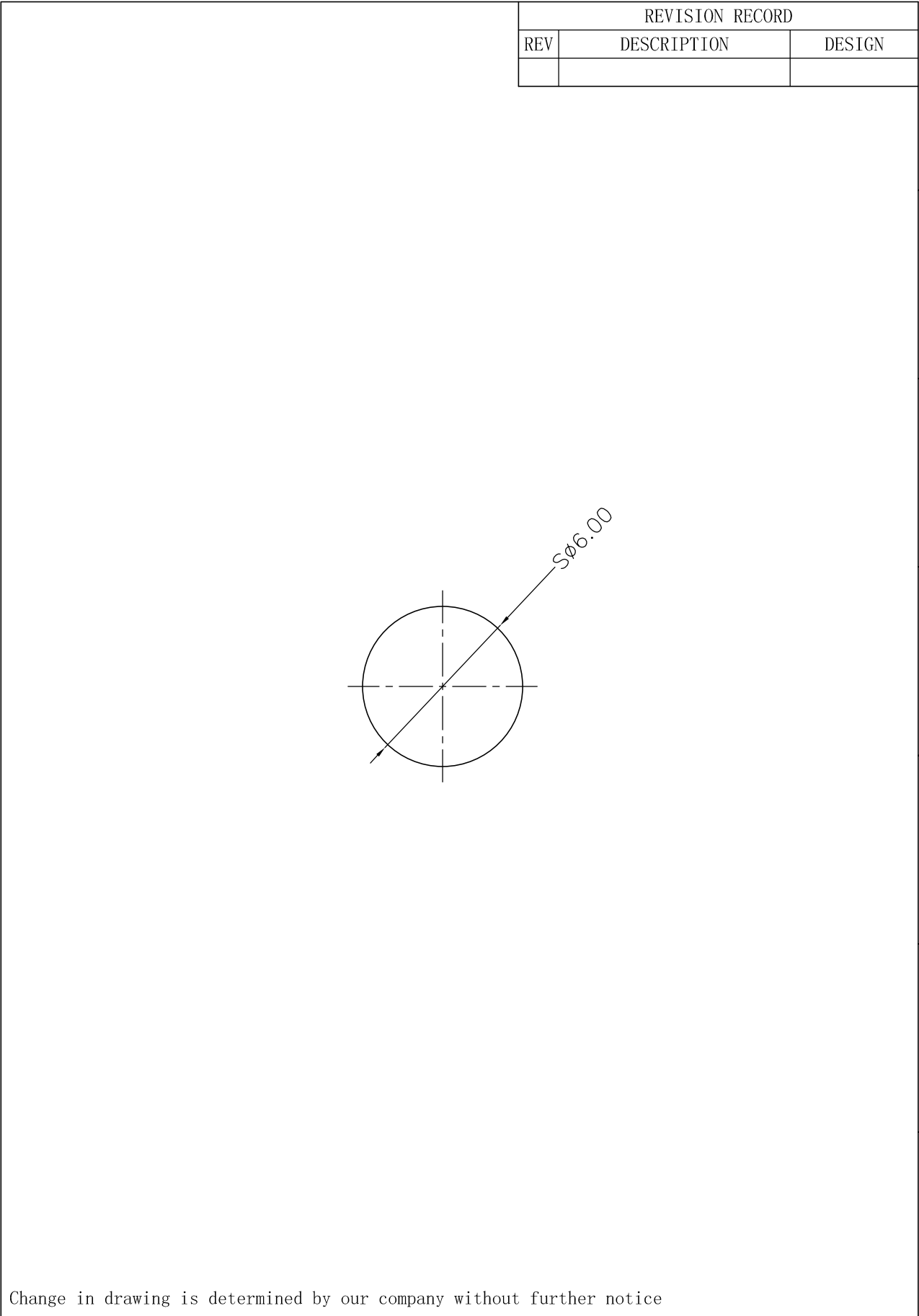
REVISION RECORD		
REV	DESCRIPTION	DATE



Change in drawing is determined by our company without further notice

<div>尺寸划分/Dimensions</div>		<div>等级/Grade</div>		<div>中級/Intermediate</div>		<div>粗糙/Rough</div>		<div>审核/Examine:</div>		<div>设计/Design: 郭胜 06.09.04</div>	
<div>1-4</div>		<div>±0.05</div>		<div>±0.10</div>		<div>±0.15</div>		<div>批准/Approval:</div>			
<div>4-16</div>		<div>±0.07</div>		<div>±0.20</div>		<div>±0.30</div>		<div>材料/Material: HDPE/5306J</div>			
<div>16-63</div>		<div>±0.10</div>		<div>±0.30</div>		<div>±0.70</div>		<div>Closure</div>			
<div>63-250</div>		<div>±0.20</div>		<div>±0.50</div>		<div>±1.20</div>		<div>重量/Weight: 6.01g</div>			
<div>250-1000</div>		<div>±0.50</div>		<div>±0.80</div>		<div>±2.00</div>		<div>数量/Q'ty: 1</div>			

<div>特力宝</div>		<div>THIRAT CORPORATION</div>	
<div>CEH-15, Far East Industry Park, Yuen Hong Ning Province, (315100)</div>		<div>Rev: 5616741.027608989</div>	
<div>Tel: +86 (574) 02760888</div>		<div>Tel: +86 (571) 02760888</div>	
<div>Scale: 1:1</div>		<div>Size: A4</div>	
<div>Sheet: 1/1</div>		<div>Part No: TR104</div>	



REVISION RECORD		
REV	DESCRIPTION	DESIGN

Change in drawing is determined by our company without further notice

				设计/Design: 郭胜 06.09.04		  <u>TIRRIT CORPORATION</u>	
尺寸划分MM		等级	细级	中级	粗级	审核/Examine:	
1-4			±0.05	±0.10	±0.20	批准/Approval:	
4-16			±0.07	±0.20	±0.50	Ball valve	
16-63			±0.10	±0.30	±0.70		
63-250			±0.20	±0.50	±1.20	图号/DRAWING NO. TR404/015	
250-1000			±0.30	±0.80	±2.00	系列号/PART NO. TR404	
						SHEET: 1/1	

6

5

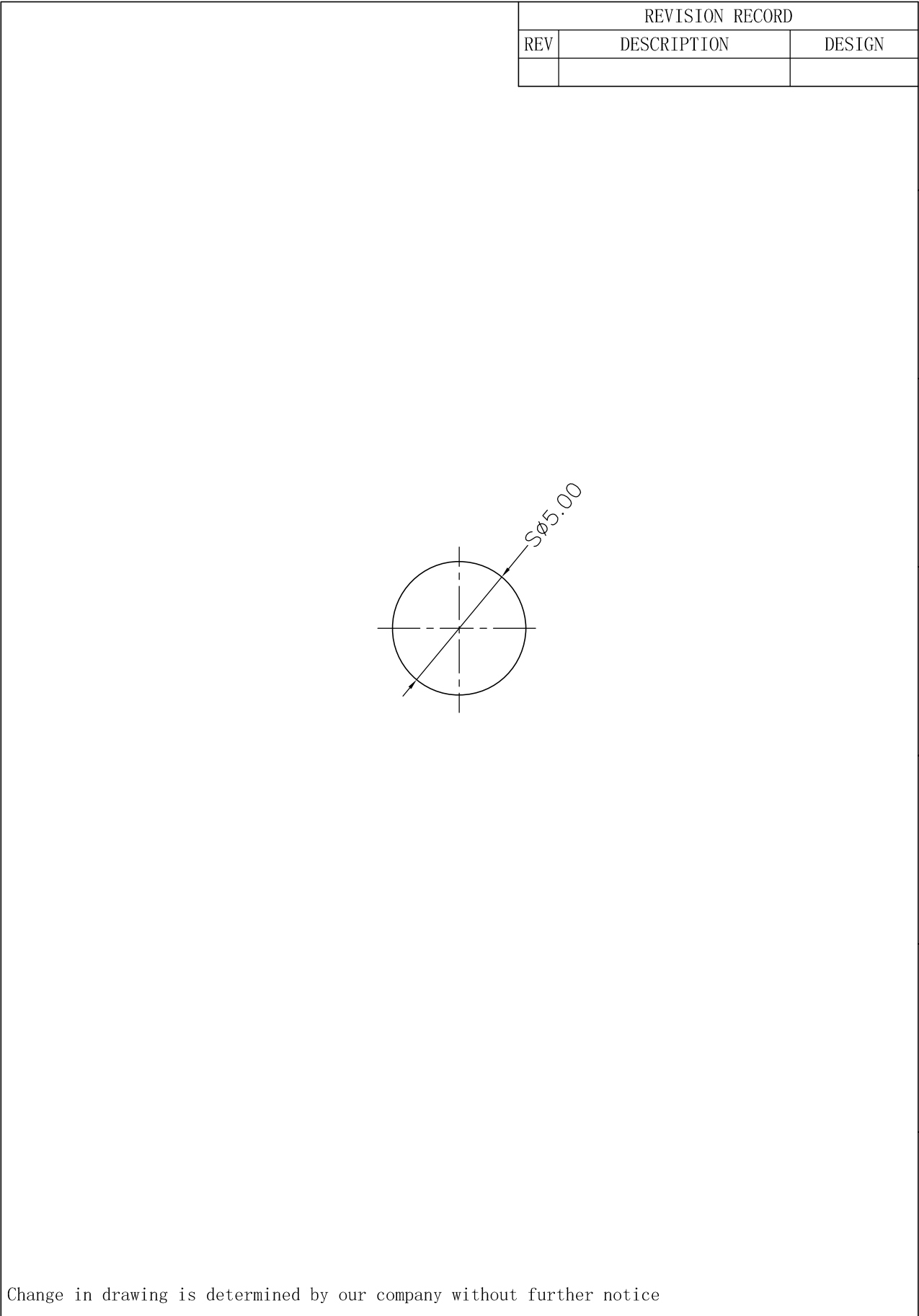
4

3

2

1

A



Change in drawing is determined by our company without further notice

<div><div>MM (INCH)</div><div><div></div><div></div></div></div>		<div><div></div><div></div><div></div></div>			设计/Design: 郭胜 06.09.04		<div><div><div></div></div><div>特力工寶</div><div>TIRRIT CORPORATION</div><div>Fax: +86 (574) 62760899 Tel: +86 (574) 62760888</div><div>PLANT: CE14-15, Far Edst Industry Park, Yuyao, Zhejiang Province, China</div></div>			
尺寸划分MM等级		细级	中级	粗级	审核/Examine:		Ball valve			SCALE:
1-4		±0.05	±0.10	±0.40	批准/Approval:					REV: A
4-16		±0.07	±0.20	±0.50	材料/Material: SUS304		图号/DRAWING NO. TR404/016			SIZE: A4
16-63		±0.10	±0.30	±0.70	重量/Weight: 0.5g					SHEET: 1/1
63-250		±0.20	±0.50	±1.20	数量/Qty: 1		系列号/PART NO. TR404			
250-1000		±0.30	±0.80	±2.00						

6

5

4

3

2

1

A

B

C

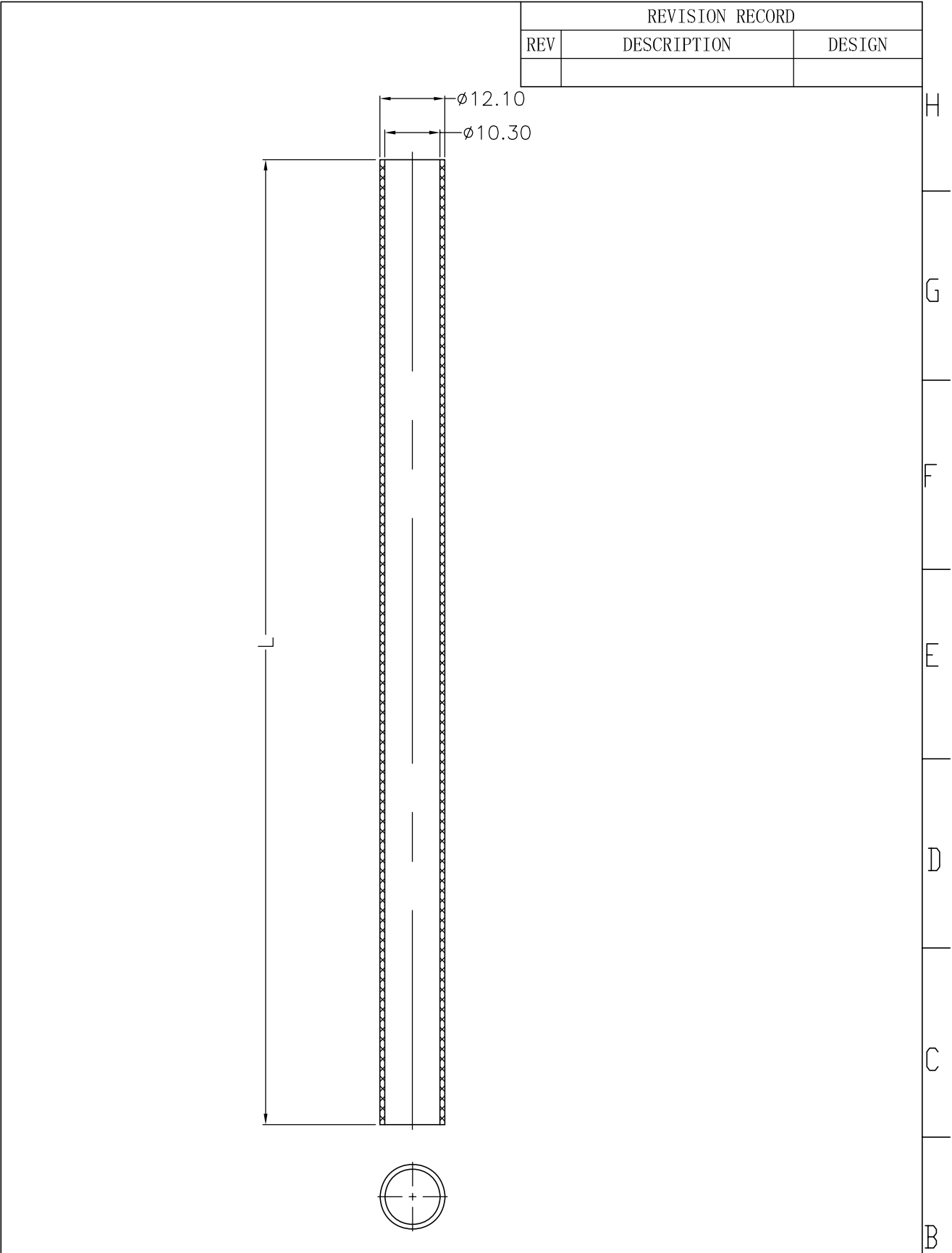
D

E


F

G

H



Change in drawing is determined by our company without further notice

<div>MM (INCH)</div>				设计/Design: 鲁科科2016. 11. 26		 特力工贸		TIRRIT CORPORATION			
尺寸划分MM		等级		审核/Examine:		PLANT:CE14-15, Far Edst Industry Park, Yuyao, Zhejiang Province, China		Fax:+86 (574) 62760899 Tel:+86 (574) 62760888			
1-4		±0.05 ±0.10		±0.20		批准/Approval:		Dip tube		SCALE:	
4-16		±0.07 ±0.20		±0.50		材料/Material:LDPE				REV: A	
16-63		±0.10 ±0.30		±0.70		重量/Weight:		图号/DRAWING NO. TR404/017/02		SIZE: A4	
63-250		±0.20 ±0.50		±1.20		数量/Qty:1		系列号/PART NO. TR404		SHEET: 1/1	
250-1000		±0.30 ±0.80		±2.00							

6

5

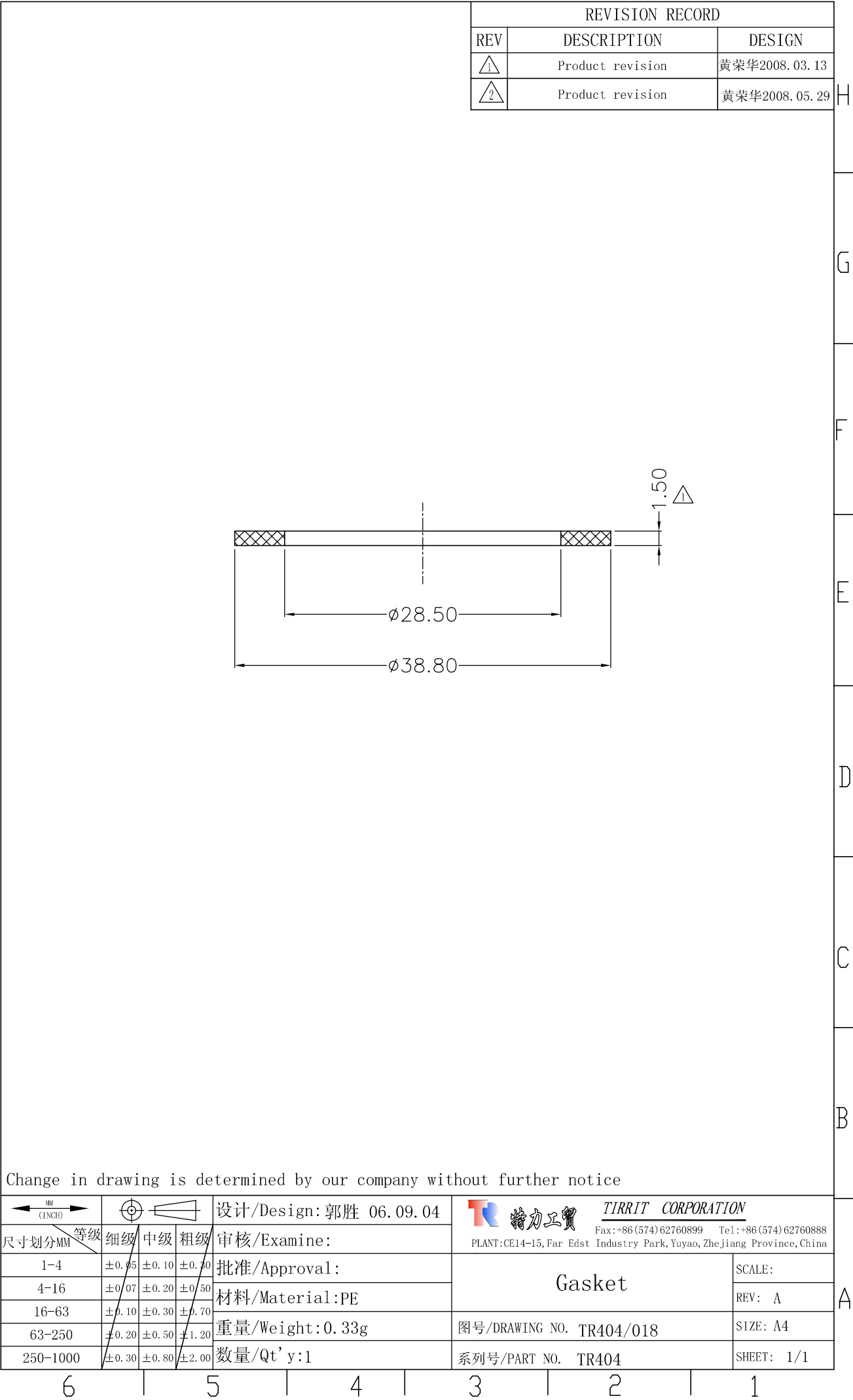
4

3

2

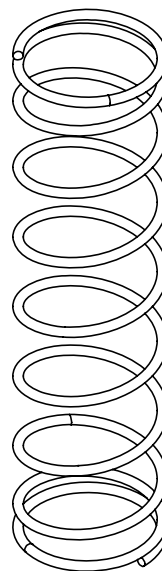
1

A





A	B	C	D	E	F	G	H
---	---	---	---	---	---	---	---



				设计/Design: 郭胜 06.09.04		 <b>精力士</b> <u>TIRRIT CORPORATION</u>		Fax: +86 (574) 62760899 Tel: +86 (574) 62760888 PLANT: CE14-15, Far Edst Industry Park, Yuyao, Zhejiang Province, China	
尺寸划分MM等级 1-4 4-16 16-63 63-250 250-1000	细级	中级	粗级	审核/Examine:	Spring	SCALE:			
	$\pm 0.05$	$\pm 0.10$	$\pm 0.20$	批准/Approval:		REV: A			
	$\pm 0.07$	$\pm 0.20$	$\pm 0.50$	材料/Material: SUS201 		SIZE: A4			
	$\pm 0.10$	$\pm 0.30$	$\pm 0.70$	重量/Weight: 6.4g		图号/DRAWING NO. TR404/021			
	$\pm 0.20$	$\pm 0.50$	$\pm 1.20$	数量/Qt' y: 1		系列号/PART NO. TR404			
$\pm 0.30$	$\pm 0.80$	$\pm 2.00$				SHEET: 1/1			

---

1

A

## (ST4040)M43 10ML

1 samples: production on the 2015-01-05

2 we tested our samples and they have been declared CONFORM for the following reasons:

NO	Method	TESTS	Quantit y to test	CRITERIA	OUT OF THE NORM	Measured values
1	QAC-MC-082	Dip tube holding force	20	9.8N minimum	NONE	MINI: 19N MAXI:32N AVERAGE:23.7N
2	QAC-MC-069(spray) or QAC-MC-073(distribution)	Priming (number of strokes to prime)	50	5 strokes maximum	NONE	3 to 6 times
3	48 h rest after priming, bottles standing up at room temperature	No un-priming	50	Whole or part of the dose is expelled at the first stroke	NONE	All pumps primed when pressed at the first stroke
4	QAC-MC-068 (average of 10 doses for spray et dispensers)	Regularity of dosage (output).	50	All results at 10±1.5ML max from average value	NONE	MINI:10.07ML MAXI:11.43ML AVERAGE:10.81ML (Test liquid: Water)
5	QAC-MC-067 measured at approximately 70% of total stroke ;	Functioning force.	8	All results at +/- 20% from average value.	NONE	MINI: 33.5N MAXI: 36.5N AVERAGE: 35.0N
6	Speed 317mm/min. same course as above ; Spray : alcohol dispenser < 0.5ml : with a cream dispenser > 0.5ml : with a shampoo	Functioning force when filled with alcohol.	8	Under 25Newton : always OK. Up to 40Newton : depending upon ergonomics of actuation.	8	MINI:43N MAXI: 46N AVERAGE:44.87N (Test liquid:Water)
7	QAC-MC-085	Test for rusting of springs and balls	40	As per method.	NONE	

### 3: results of our tests :

NO	TEST ITEMS	TEST METHOD	TEST RESULTS
1	Dip tube holding force(N)	Force meter measure the dip tube holding force	19N 30N 28N 21N 19N 26N 23N 25N 22N 24N 30N 27N 32N 24N 20N 25N 19N 19N 26N 23N MINI:19N      MAXI:32N      AVERAGE:23.7N
2	Priming	Press acuator until it prime	3 to 6 times
3	No un-priming	48 h rest after priming, then press acuator until it prime	All pumps primed when press at the first time
4	Output(ml)	Try to press actuator until it prime, and press 10 times, balance the overall output on the lectronic scale, then working-out the output	11.19 11.03 10.86 10.77 10.63 11.05 10.69 11.43 11.38 11.12 10.49 10.67 11.25 10.87 10.26 10.95 10.56 10.27 11.03 10.39 11.28 11.16 11.39 10.78 10.55 10.39 10.68 10.72 10.56 11.28 11.18 10.53 10.46 10.87 11.38 11.05 10.36 10.45 10.27 10.15 10.07 10.97 11.05 10.67 11.23 11.09 10.35 10.69 10.66 11.13 MINI:10.07ML      MAXI:11.43ML      AVERAGE:10.81ML
5	Functioning force(N)	press force meter approximately 70 % of total stroke of acuator, then read the munber of force Meter (5mm)	36N 35.5N 36.5N 34.5N 35N 34N 33.5N 35N MINI:33.5N      MAXI:36.5N      AVERAGE:35.0N
6	Functioning force when filled with alcohol(N)	press force meter with speed 317mm/min of total stroke of acuator, then read the munber of force Meter	45N 44.5N 46N 45.5N 43N 46N 45N 44N MINI:43N      MAXI:46N      AVERAGE:44.87N
7	Test for rusting of springs	keep 20pcs springs into 150g/L' brine, and put them into oven with 55℃ for 24h	

Testers:Lu  
date:2015-01-09

# ANNEXE 4

FEBEA - Juillet 2012 - Version EN

## REGULATORY ATTESTATION FROM THE PACKAGING SUPPLIER relating to packaging items supplied to the company : [ST4040] Packaging in direct contact with the cosmetic product

### PACKAGING SUPPLIER

Company name (packaging supplier)

YuYao Tirrit Co.,Ltd.

Address (packaging supplier)

CE14-15, Far East Industrial Park, Yuyao, Zhejiang Province, China

### PACKAGING

Reference(s) relative to this certificate

-ST4041 M43 10ML  
-

### NECESSARY INFORMATION FOR COMPLIANCE WITH THE REGULATORY REQUIREMENTS APPLICABLE TO COSMETIC PRODUCTS

A confidential agreement is signed, if necessary

**Cosmetic Regulation** on cosmetic product safety obligation, taking into account the relevant characteristics of the packaging in direct contact with the cosmetic formula and any other useful information for this specific purpose (Regulation n°1223/2009 - Annex I)

#### Packaging composition, purity, stability data (substance migration from the packaging)

Is it a multi-material packaging ?

☒ Yes / ☐ No

#### Material(s) classification

For multi-materials, please indicate content from inside to outside

-PP、PE、SUS

#### Chemical nature of the material (% to be given)

For multi-materials, please indicate from inside to outside layers

1、PP(64.1861%) 2、PE(21.6911%) 3、SUS(14.1228%)

#### Impurities present in the material, which are technically unavoidable

To be identified with the chemical name, CAS number ;  
Concentration to be given

-  
-  
-

#### Technical substances (additives) used for the production of the packaging (colorant, antioxidant, UV filter, lubricant...)

To be identified with the chemical name, CAS number ;  
Concentration to be given

-  
-  
-  
-

#### Presence of substances listed in the annex II of the Cosmetic Regulation or classified as CMR 1A, 1B, 2 according to the Regulation n°1272/2008

If yes, identification of the substance and its concentration

☐ Yes / ☒ No

All supporting elements to be indicated and enclosed

#### Additional information on the packaging that can be useful for the safety evaluator of the finished cosmetic product

The packaging material(s) complies with the composition requirement of :

- the regulation on materials intended to come into contact with food
- the European Pharmacopoeia on recipients for pharmaceutical usage
- the toys safety regulation

All supporting elements to be indicated and enclosed

☒ Yes / ☐ No

☐ Yes / ☐ No

☒ Yes / ☐ No

Indicate the type of product(s) compatible with the packaging :

- all types of products
- aqueous products
- fatty / oily products
- products with an acidic pH
- products with a basic pH
- alcoholic products

All supporting elements to be indicated and enclosed

☐ Yes / ☐ No

☒ Yes / ☐ No

☒ Yes / ☐ No

☐ Yes / ☐ No

☐ Yes / ☐ No

☒ Yes / ☐ No

Migration data available

☐ Yes / ☐ No - All supporting elements to be indicated and enclosed

## ANNEXE 4

FEBEA - Juillet 2012 - Version EN

### Packaging and packaging waste Regulation (Directive 94/62/EC)

-The above-named company (packaging supplier) certifies that the packaging complies with the Directive 94/62/EC as well as the heavy metals level: the total concentration levels of lead, cadmium, mercury and hexavalent chromium shall not exceed 100 ppm by weight in the packaging (any supporting documents on heavy metals to be sent)

-For glass packaging containing crystal or recycled materials, indicate the total concentration levels of cadmium, mercury, hexavalent chromium:

-
---

### REACH Regulation (Regulation EC n°1907/2006)

- The above-named company (packaging supplier) certifies that the packaging is strictly in accordance with the REACH Regulation, and in particular complies with the restrictions included in annex XVII and with the authorisations/bans included in annex XIV, and commits to informing the recipient of this certificate (the customer) of any compliance gap in relation to REACH Regulation.

- The above-named company (packaging supplier) commits to conformy with the REACH regulation application to clearly and systematically communicate to the addressee of this certificate (the customer) the presence of substances of very high concern\* (SVHC) which are included in the "candidate list" , exceeding more than 0.1%(weight/weight) in the packaging, taking into account in particular the evolutions of the 'candidate list'.

\*[http://echa.europa.eu/chem\\_data/candidate\\_list\\_table\\_en.asp](http://echa.europa.eu/chem_data/candidate_list_table_en.asp)

Presence of SVHC substances included in the "candidate list"

☐ Yes / ☒ No

If yes, identification of the substance and its concentration

All supporting elements to be indicated and enclosed

### CUSTOMER SPECIFIC REQUIREMENTS

- The above-named company (packaging supplier) certifies having knowledge of the specific requirements of the company [XXXX] (the customer) - **requirements specified in the document yyy** - and confirms that the indicated packaging conforms with these requirements.

- The above-named company (packaging supplier) certifies that the above information is exact.

- The above-named company (packaging supplier) commits to informing the recipient of this certificate of any change of quality of the packaging and of any change in its content.

- The addressee of this certificate (the customer) reserves the right to verify the accuracy of the information provided.

Drawn up in :

Company stamp :

Date :

Name :

Function:

Signature:

